

# PERMASHIELD™

# PERMASHIELD™



PROTECTION FROM NATURE™

Call us today to find out what Guardian Retention Systems' products can do for you.



BEAU ADAMS  
OWNER  
502.655.6036  
[beau@erosionmaster.com](mailto:beau@erosionmaster.com)

JOHN GARFIELD  
OPERATIONS MGR  
[john@erosionmaster.com](mailto:john@erosionmaster.com)  
502.528.0712

DONNIE BISCHOFF  
SALES MGR  
502.262.8082  
[donnie@erosionmaster.com](mailto:donnie@erosionmaster.com)



Guardian Retention Systems, LLC  
116 Cabin Creek Dr.  
Brooks, KY 40109

502-379-4517  
[www.guardianretentionsystems.com](http://www.guardianretentionsystems.com)

PROTECTION FROM NATURE™



# GUARDIAN™

RETENTION SYSTEMS

## RETAINING WALLS

Permashield™ system is a proven, effective solution to the toughest erosion situations. This multipurpose barrier system can be used to stabilize slides, reinforce banks/levees, provide road shoulders in areas at high erosion risk, and much more. The ONLY solution of its kind that can be filled with concrete: ANY LENGTH ANY HEIGHT



### VERSATILE

- Retaining Walls
- Permanent Barriers
- Custom Cofferdams
- Levee Reconstruction
- Shoreline Management
- Bank Stabilization
- Flood Protection
- Foundation Protection
- Pier Scour Protection

- Biodegradable Cells
- 3x < Industry Avg. Safety Factor

Performance Studies By:

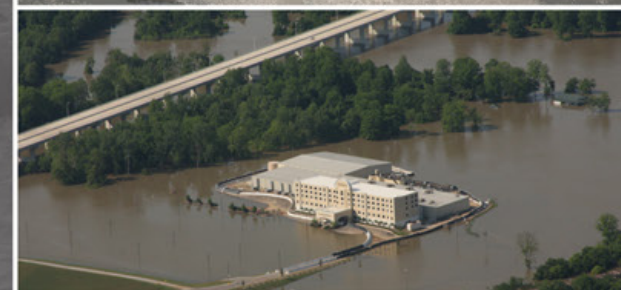
- Precision Engineering, LLC
- ACES, Inc
- Army Corps of Engineers

100' Poured Concrete in just  
**ONE HOUR**

## FLOOD FIGHTING

Permashield™ system is a quick and efficient solution to rising flood waters. The shape of the system allows for impenetrable protection and is specifically designed to resist overturning, and washing out.

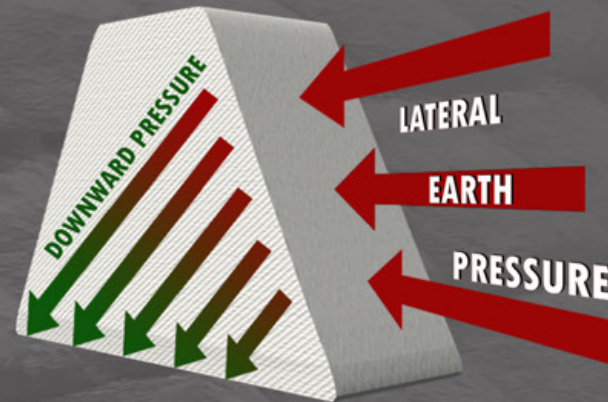
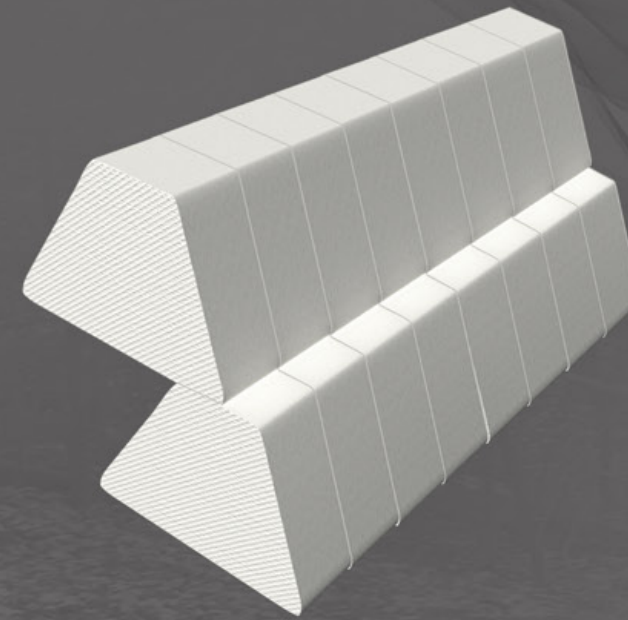
- 6' Height x 100' Length erected in just 20 minutes
- Army Corps of Engineers tested and approved
- Steel delivery system designed for any terrain



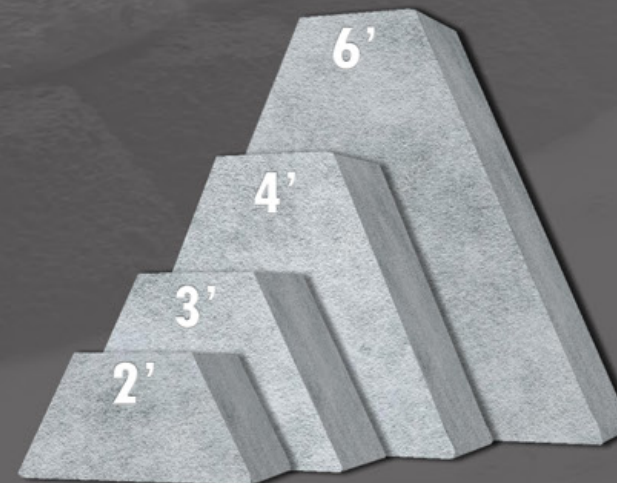
1 MILE PERIMETER  
8' TALL FLOOD WALL  
ERECTED IN 35 HOURS



PROTECTION FROM NATURE™



Redirects lateral earth pressure to downward pressure, stabilizing the base and reinforcing the wall



**STRONG:** Each cell is made from Heavy-Duty '8' ounce woven polypropylene coated fabric secures the material

**WATERTIGHT:** Trapezoid creates downward 'sealing' pressure

**CONTINUOUS CHAIN:** Permashield™ systems come in 50' sections and are joined together via 3,000 LB tensile strength nylon strapping with metal D-Rings

**RAPID INSTALLATION:** Permashield™ system produces the quickest custom concrete wall on the market

The Permashield™ system is the only of its kind shaped as an "Isosceles Trapezoid"

This provides symmetry about the center axis

- Stable base resists sliding
- Stable base resists rotational forces

The non-wire frame of the Permashield system allows it to take the shape of the ground, which increases the actual footprint

Permashield™ comes in a versatile range of systems. Each system is compatible with the next, allowing for a combination to reach your desired height.

- Flexible to match unlevel surfaces
- Ability to match any radius